

NOVEMBER 07

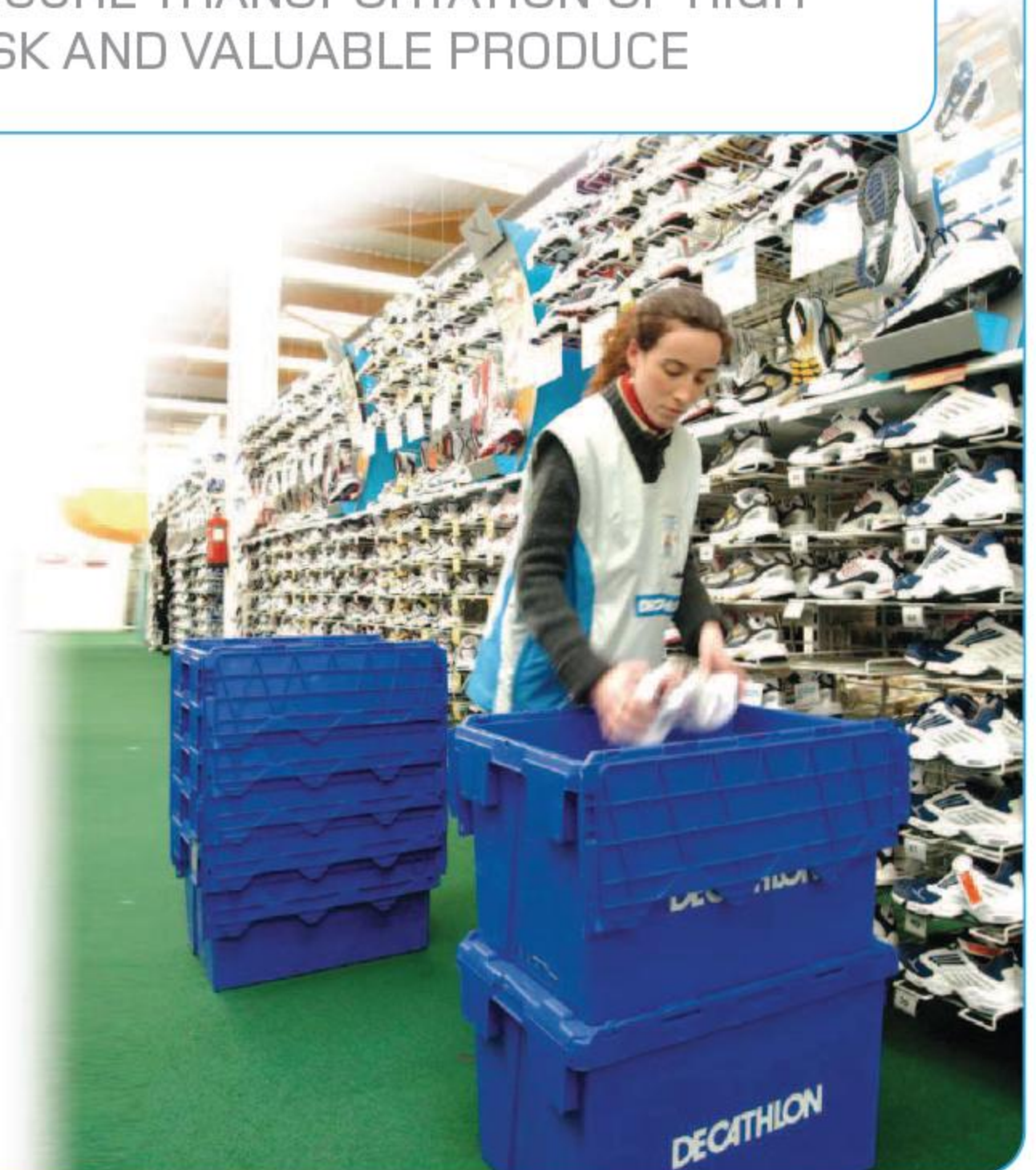


attached lid container

ATTACHED LID CONTAINER

SECURE TRANSPORTATION OF HIGH
RISK AND VALUABLE PRODUCE

FACT FILE



LINPAC ALLIBERT ALCs

CUSTOMER BENEFITS



CUSTOMER BENEFITS SUMMARISED

FEATURE	BENEFIT TO CUSTOMER
Can be fitted with tamper- evident seals to protect high value goods and ensure confidentiality	Seals cannot be removed without breakage – guaranteeing a visual identification of whether a container has been opened.
Smooth internal surface with rounded corners	Greater product protection
Resistance to most chemicals and UV, withstands temperature extremes (-18°C to + 60°C)	Greater durability
Strong and impact-resistant. Can typically stack up to 8 high carrying unit load of up to 30kg	Robust, practical and efficient to use.
A range of labelling and printing options as well as RFID available to improve identification	Easily identifies contents, enhances brand identity, deters theft and reduces losses
7 years average life span in pooling, recyclable at end	Long lifespan and more cost effective than disposable packaging, reduced waste
Can be nested to 75% for return transport	Reduced logistics costs.
Compatible with most forms of conveyor and automated handling equipment	Quicker and more cost effective filling and handling
Wheeled dollies available	Easier and more efficient handling, reduced fork lift truck movements
Smooth surfaces and curved corners free from dirt traps	Quick and easy to clean, compatible with high pressure washers up to 90C
Manufactured in food-grade polypropylene –materials and colouring agents conform to EC 90/128 and EC94/62	Can be used for home shopping services with total confidence



LINPAC ALLIBERT ALCs

MARKET	APPLICATIONS	PRODUCTS
<p>RETAIL INC: Department stores Clothing / accessories Chemists / pharmaceutical Electrical / photographic Home / DIY Jewellers / high value etc...</p>	<p>* Retail non-food distribution from DC to store</p> <p>Order picking and distribution from DC to store</p> <p>Supermarket Home Shopping delivery</p>	<p>600x400mm and Buckhorn non-Euro size ALCs</p> <p>DPC (Distribution Picking Container)</p> <p>600x400mm and 400x300mm ALCs</p>
<p>Logistics / Transport Manufacturing (non-food) inc: Automotive Aerospace Electrical Goods Engineering Pharmaceutical Plastics Components etc...</p>	<p>* 3PL operators providing Retail distribution from manufacturer / supplier to DC to store</p> <p>Postal services</p> <p>General distribution applications (to next tier manufacturer / final assembler, * Retail DC, wholesaler, etc) Order picking and distribution Automotive wiring looms & harnesses</p>	<p>Wide variety of Euro and Large ALCs</p> <p>Sortation for delivery from regional hub to regional hub Wide variety of Euro and Large ALCs</p> <p>DPC (Distribution Picking Container) Large long ALCs</p>
<p>Services (non public)</p>	<p>Container Rental Removals Archive Storage (Banks, Insurance, etc.) Laundry Services</p>	<p>Large ALCs Large ALCs Euro and Large ALCs Large ALCs</p>
<p>Public Services</p>	<p>Police scenes of crime Police forensic evidence Hospital pharmaceuticals / CSSD</p>	<p>All models with tamper-evident seals Allibert ref. 1005B fitted with insulated liner Euro ALCs</p>

LINPAC ALLIBERT EURO ALCs

10005 Stacks two-up on 10020 & 10025

Ext.Dim. 300 x 200 x 130 mm
Int.Dim. 245 x 160 x 101 mm
Nest ht 80 mm
Capacity 4 litres
Weight 0.7Kg
Colour Dark green/light green
SKU qty 196



10010 Stacks two-up on 10020 & 10025

Ext.Dim. 300 x 200 x 200 mm
Int.Dim. 235 x 152 x 174 mm
Nest ht 80 mm
Capacity 6 litres
Weight 0.85Kg
Colour Dark green/light green
SKU qty 176



10020 Stacks two-up on 10040, 1005B & 1006B

Ext.Dim. 400 x 300 x 252 mm
Int.Dim. 325 x 246 x 222 mm
Nest ht 100 mm
Capacity 20 litres
Weight 1.65Kg
Colour Dark green/light green
SKU qty 81



1BK22

Ext.Dim. 400 x 300 x 282 mm
Int.Dim. 345 x 240 x 255 mm
Nest ht 114 mm
Capacity 22 litres
Weight 1.4Kg
Colour Light grey



10022 as reference above.

Minimum order items

1BK25

Ext.Dim. 400 x 300 x 318 mm
Int.Dim. 345 x 240 x 292 mm
Nest ht 114 mm
Capacity 25 litres
Weight 1.5Kg
Colour Light grey



10025 Stacks two-up on 10040, 1005B & 1006B

Ext.Dim. 400 x 300 x 320 mm
Int.Dim. 321 x 244 x 295 mm
Nest ht 100 mm
Capacity 25 litres
Weight 1.87Kg
Colour Dark green/light green
SKU qty 81



Minimum order items

10027 as reference above.

10040

Ext.Dim. 600 x 400 x 250 mm
Int.Dim. 515 x 343 x 215 mm
Nest ht 85 mm
Capacity 40 litres
Weight 2.79Kg
Colour Dark green/light green, grey/red, grey/blue, grey/yellow, grey/green
SKU qty 44



1BK40 Interstacks with 1BK52 & 1BK62

Ext.Dim. 600 x 400 x 250 mm
Int.Dim. 501 x 328 x 205 mm
Nest ht 67 mm
Capacity 40 litres
Weight 2.9Kg
Colour Light grey



Minimum order items

1BK52 Interstacks with 1BK40 & 1BK62

Ext.Dim. 600 x 400 x 310 mm
Int.Dim. 501 x 328 x 267 mm
Nest ht 67 mm
Capacity 52 litres
Weight 3.1Kg
Colour Light grey



Minimum order items

1005B

Ext.Dim. 600 x 400 x 320 mm
Int.Dim. 508 x 335 x 285 mm
Nest ht 85 mm
Capacity 54 litres
Weight 3.20Kg
Colour Dark green/light green, grey/red, grey/blue, grey/yellow, grey/green
SKU qty 40



1005C, 1005Y as reference above.

1BK62 Interstacks with 1BK40 & 1BK52

Ext.Dim. 600 x 400 x 365 mm
Int.Dim. 501 x 328 x 325 mm
Nest ht 67 mm
Capacity 62 litres
Weight 3.4Kg
Colour Light grey



Minimum order items

1006C Pimple-pads on all 4 sides for easy removal of adhesive labels.

Ext.Dim. 600 x 400 x 365 mm
Int.Dim. 501 x 328 x 330 mm
Nest ht 85 mm
Capacity 64 litres
Weight 3.38Kg
Colour Blue/yellow
SKU qty 36



Minimum order items

1006B Interstacks with 1BK40 & 1BK52

Ext.Dim. 600 x 400 x 365 mm
Int.Dim. 501 x 328 x 330 mm
Nest ht 85 mm
Capacity 64 litres
Weight 3.39Kg
Colour Dark green/light green
SKU qty 36



1006Y Insert in lid for label holder OPE41

Ext.Dim. 600 x 400 x 365 mm
Int.Dim. 501 x 328 x 330 mm
Nest ht 85 mm
Capacity 64 litres
Weight 3.38Kg
Colour Dark green/light green
SKU qty 36



10066

Ext.Dim. 600 x 400 x 365 mm
Int.Dim. 512 x 329 x 355 mm
Nest ht 115 mm
Capacity 67 litres
Weight 3.9Kg
Colour Dark green/light green



1B802

Ext.Dim. 374 x 343 x 388 mm
Int.Dim. 286 x 286 x 302 mm
Nest ht 85 mm
Capacity 28 litres
Weight 2.24Kg
Colour Light grey



Minimum order items

1B818

Ext.Dim. 374 x 343 x 387 mm
Int.Dim. 283 x 283 x 351 mm
Nest ht 85 mm
Capacity 32 litres
Weight 2.29Kg
Colour Light grey
SKU qty 196



1B417

Ext.Dim. 510 x 295 x 190 mm
Int.Dim. 430 x 245 x 153 mm
Nest ht 62 mm
Capacity 18 litres
Weight 1.7Kg
Colour Light grey



1B433 Bi-hinge lid clips back on itself, preventing it hanging lower than the container.

Ext.Dim. 546 x 387 x 168 mm
Int.Dim. 467 x 323 x 133 mm
Nest ht 76 mm
Capacity 22 litres
Weight 2.1Kg
Colour Light grey



1B443

Ext.Dim. 552 x 387 x 245 mm
Int.Dim. 467 x 330 x 205 mm
Nest ht 56 mm
Capacity 35 litres
Weight 2.4Kg
Colour Light grey



1B453

Ext.Dim. 552 x 387 x 318 mm
Int.Dim. 455 x 320 x 285 mm
Nest ht 62 mm
Capacity 27 litres
Weight 1.4Kg
Colour Light grey, red, green, dark blue



1B473

Ext.Dim. 552 x 387 x 325 mm
Int.Dim. 455 x 320 x 290 mm
Nest ht 65 mm
Capacity 47 litres
Weight 2.7Kg
Colour Light grey



1B405

Ext.Dim. 567 x 330 x 327 mm
Int.Dim. 483 x 254 x 298 mm
Nest ht 40 mm
Capacity 82 litres
Weight 2.7Kg
Colour Light grey



1B111 Drainage holes in base

Ext.Dim. 600 x 278 x 355 mm
Int.Dim. 508 x 210 x 308 mm
Nest ht 114 mm
Capacity 35 litres
Weight 3.4Kg
Colour Dark grey



LINPAC ALLIBERT EURO ALCs

1B535 Drainage holes in base

Ext.Dim. 600 x 280 x 230 mm
Int.Dim. 513 x 215 x 181 mm
Nest ht 87 mm
Capacity 21 litres
Weight 2.8Kg
Colour Dark grey



1B194 Drainage holes in base

Ext.Dim. 600 x 485 x 355 mm
Int.Dim. 508 x 411 x 308 mm
Nest ht 114 mm
Capacity 68 litres
Weight 5.0Kg
Colour Dark grey



1B202

Ext.Dim. 610 x 495 x 320 mm
Int.Dim. 520 x 423 x 273 mm
Nest ht 57 mm
Capacity 65 litres
Weight 3.7Kg
Colour Light grey



1B524

Ext.Dim. 689 x 430 x 320 mm
Int.Dim. 600 x 350 x 289 mm
Nest ht 75 mm
Capacity 66 litres
Weight 3.7Kg
Colour Light grey



1B523 Wire hinge

Ext.Dim. 689 x 430 x 320 mm
Int.Dim. 600 x 350 x 289 mm
Nest ht 75 mm
Capacity 66 litres
Weight 3.7Kg
Colour Light grey



AT432204

Ext.Dim. 400 x 300 x 222 mm
Int.Dim. 338 x 254 x 197 mm
Nest ht 51%
Capacity 18 litres
Weight 1.8Kg
Colour Blue



Minimum order items

AT432604

Ext.Dim. 400 x 300 x 264 mm
Int.Dim. 334 x 254 x 239 mm
Nest ht 59%
Capacity 22 litres
Weight 1.9Kg
Colour Blue



AT433104

Ext.Dim. 400 x 300 x 306 mm
Int.Dim. 329 x 250 x 282 mm
Nest ht 64%
Capacity 25 litres
Weight 2.1Kg
Colour Blue



AT642604

Ext.Dim. 600 x 400 x 264 mm
Int.Dim. 530 x 353 x 240 mm
Nest ht 75%
Capacity 48 litres
Weight 3Kg
Colour Blue



AT643104

Ext.Dim. 600 x 400 x 306 mm
Int.Dim. 514 x 350 x 281 mm
Nest ht 64%
Capacity 54 litres
Weight 3.2Kg
Colour Blue



AT643604

Ext.Dim. 600 x 400 x 365 mm
Int.Dim. 508 x 346 x 340 mm
Nest ht 70%
Capacity 65 litres
Weight 3.5Kg
Colour Blue



AT644004

Ext.Dim. 600 x 400 x 400 mm
Int.Dim. 521 x 343 x 375 mm
Nest ht 78%
Capacity 70 litres
Weight 3.7Kg
Colour Blue



AT541704

Ext.Dim. 500 x 400 x 175 mm
Int.Dim. 430 x 352 x 145 mm
Nest ht 60%
Capacity 150 litres
Weight 2.2Kg
Colour Burgundy



AT542404

Ext.Dim. 500 x 400 x 240 mm
Int.Dim. 430 x 352 x 205 mm
Nest ht 66%
Capacity 28 litres
Weight 2.3Kg
Colour Burgundy



AT543004

Ext.Dim. 500 x 400 x 300 mm
Int.Dim. 430 x 352 x 266 mm
Nest ht 73%
Capacity 36 litres
Weight 2.5Kg
Colour Burgundy



AT544004

Ext.Dim. 500 x 400 x 400 mm
Int.Dim. 430 x 352 x 365 mm
Nest ht 80%
Capacity 49 litres
Weight 2.8Kg
Colour Burgundy



LARGE ATTACHED LID CONTAINERS

10082 6 drainage holes in base

Ext.Dim. 710 x 460 x 368 mm
Int.Dim. 597 x 374 x 330 mm
Nest ht 80 mm
Capacity 80 litres
Weight 4.3Kg
Colour Dark green/ light green, blue, red
SKU qty 30



1B571

Ext.Dim. 710 x 530 x 390 mm
Int.Dim. 635 x 460 x 355 mm
Nest ht 140 mm
Capacity 108 litres
Weight 5.7Kg
Colour Light grey



10165

Ext.Dim. 745 x 567 x 616 mm
Int.Dim. 549 x 459 x 585 mm
Nest ht 85 mm
Capacity 165 litres
Weight 7.3Kg
Colour Grey/red



1B650

Ext.Dim. 865 x 610 x 500 mm
Int.Dim. 760 x 495 x 460 mm
Nest ht 183 mm
Capacity 180 litres
Weight 8.6Kg
Colour Light green



Minimum order items

10125

Ext.Dim. 1160 x 480 x 360 mm
Int.Dim. 1000 x 370 x 332 mm
Nest ht 80 mm
Capacity 130 litres
Weight 7.55Kg
Colour Grey/red
SKU qty 20



1B561 Drainage holes in base.

Ext.Dim. 1216 x 280 x 365 mm
Int.Dim. 1121 x 206 x 308 mm
Nest ht 115 mm
Capacity 78 litres
Weight 6.2Kg
Colour Dark grey



AT644004

Ext.Dim. 600 x 400 x 400 mm
Int.Dim. 521 x 343 x 375 mm
Nest ht
Capacity 70 litres
Weight 3.7Kg
Colour Blue



AT704604

Ext.Dim. 714 x 465 x 356 mm
Int.Dim. 598 x 375 x 307 mm
Nest ht
Capacity 75 litres
Weight 4.6Kg
Colour Blue



DISTRIBUTION PICKING CONTAINERS

- Combines ease of access required for order picking with the protection and security of a returnable Attached Lid Container.
- Sliding door combined with multi-fold lid allows easy access when on racking or shelving.
- Sliding door also permits access when stacked.
- Containers stack with lids closed and nest with lids open.
- Can be fitted with tamper-evident security seal ref. 00701.
- Multiple identification options.
- RFID.
- Printing.



10550 DPC with sliding door and standard ALC lid.

Ext.Dim. 600 x 400 x 320 mm
 Int.Dim. 505 x 334 x 292 mm
 Nest ht 110 mm
 Capacity 54 litres
 Weight 3.38Kg
 Colour Dark green/light green
 SKU qty 32



10551 Inset on lid for holder OPE41

Ext.Dim. 600 x 400 x 320 mm
 Int.Dim. 505 x 334 x 292 mm
 Nest ht 110 mm
 Capacity 54 litres
 Weight 3.38Kg
 Colour Dark green/light green
 SKU qty 32



Minimum order item

10552 DPC with sliding door and multi-fold lid.

Ext.Dim. 600 x 400 x 320 mm
 Int.Dim. 501 x 334 x 292 mm
 Nest ht 110 mm
 Capacity 54 litres
 Weight 3.2Kg
 Colour Dark green/light green
 SKU qty 32



Carried in stock

10032 Not compatible with DPC accessories.

Ext.Dim. 552 x 387 x 235 mm
 Int.Dim. 467 x 330 x 200 mm
 Nest ht 73 mm
 Capacity 33 litres
 Weight 2.7Kg
 Colour Light grey



10553 Inset on lid for holder OPE41

Ext.Dim. 600 x 400 x 320 mm
 Int.Dim. 501 x 334 x 292 mm
 Nest ht 110 mm
 Capacity 54 litres
 Weight 3.2Kg
 Colour Dark green/light green
 SKU qty 32



Minimum order item

ACCESSORIES

Seal

Range of seals available to suit all attached lid containers. 00701 carried in stock.



OPE41

Minimum order item. Label holder in K resin to fit lid of containers 1005Y, 1006Y, 10551 & 10553. Suitable for ex-Allibert containers only.



00473

Label holder in K resin for containers 10020, 10022, 10025, 10027, 10040, 1005B, 1005Y, 1006B, 1006Y, 10125, 10550, 10551, 10552 & 10553.

00474 holder for containers 10005 & 10010. Suitable for ex-Allibert containers only.



00509

Document holder for containers 10020, 10022, 10025, 10027, 1005B, 1005Y, 1006B, 1006Y, 10550, 10551, 10552 & 10553. Suitable for ex-Allibert containers only.

